



**Like what you see?
Get the whole book at the
Focal Press Bookstore**



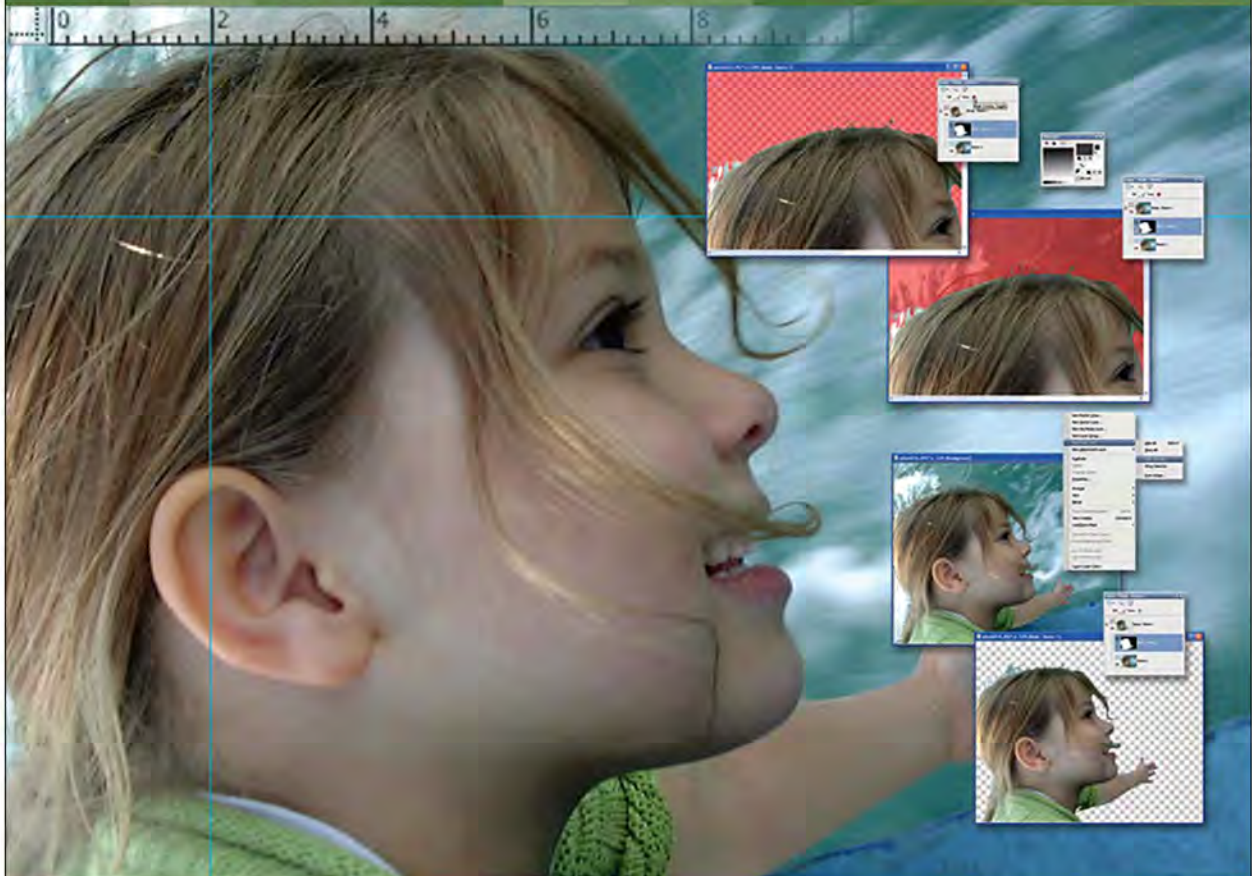
<http://focalbookstore.com/?isbn=9780240520896>

COREL

Reviewed by Corel

'This is the best book on Paint Shop Pro – period'
David Huss, author, photographer and technical writer

Paint Shop Pro Photo X2 for Photographers



Ken McMahon

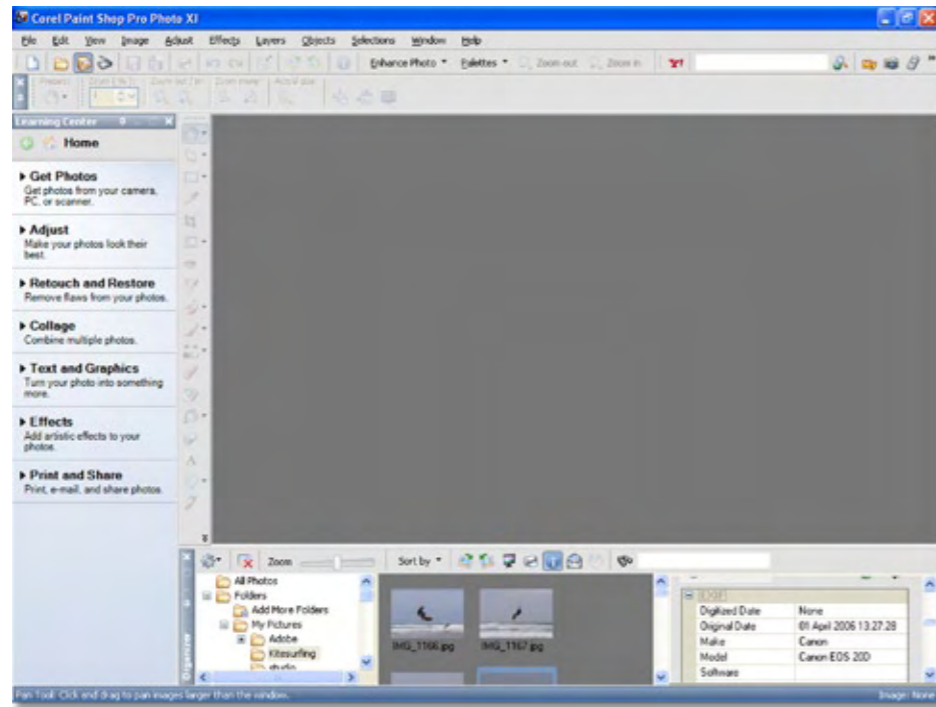


STEP-BY-STEP PROJECTS

Exploring the Learning Center

Whether you're new to Paint Shop Pro Photo, or an old hand, it's worth taking a little time to explore the Learning Center and see what it has to offer. As well as taking you step-by-step through basic editing techniques, like cropping and rotating images, the Learning Center can help you with more ambitious projects like producing a photomontage and advanced editing techniques like digital camera noise removal.

STEP 1



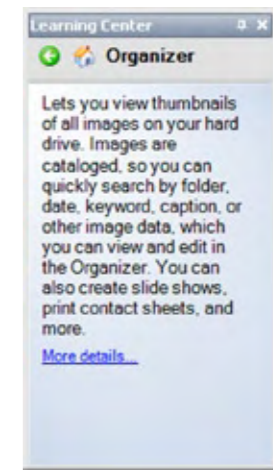
If the Learning Center isn't on the home page, click the Home button. Topics are divided into seven categories: Get Photos, Adjust, Retouch and Restore, Collage, Text and Graphics, Effects, and Print and Share. Click on any of these to view the list of available projects. You can get back to the home page either by clicking the Home button, or the Back button at the top of the Learning Center palette, just like in a web browser.

STEP 2

Click the top option, Get Photos, and on the next page click Organizer. This panel gives basic instructions on how to use the Organizer. You can find out more from the relevant section in the Help file, which you can read by clicking the More details at the bottom.

STEP 3

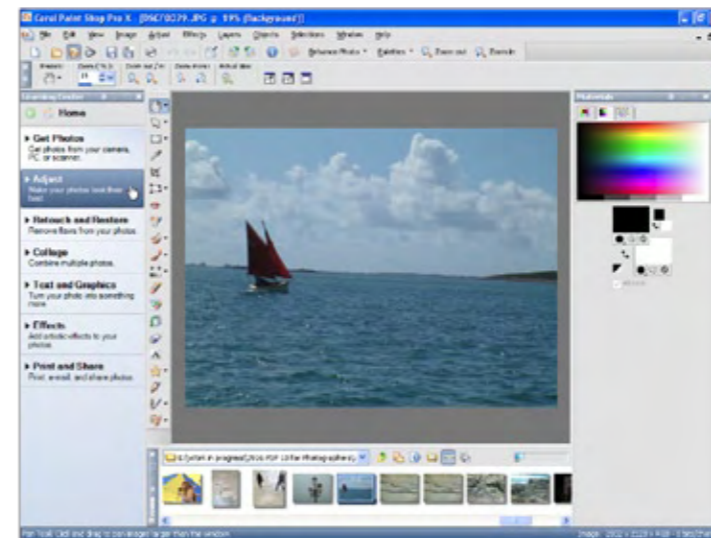
Follow the instructions to open an image from your hard disk using the Organizer, then click the Home button to return to the home page.

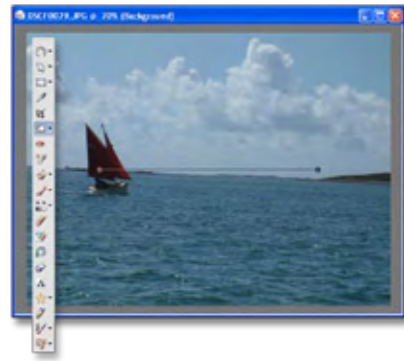


Straightening an image

STEP 1

It's often not until you get to look at your photos on screen that you realize the horizon isn't level. Deliberate tilting of the camera to create a dynamic angle is one thing; a horizon that runs downhill, whether due to a tilted camera or skewed scanning, is generally to be avoided and can easily be fixed. Use the Organizer to open the offending image and click the Adjust button on the home page of the Learning Center.



**STEP 2**

Click the Straighten button in the Learning Center. The Straighten tool is automatically selected for you (it's the sixth tool from the top of the toolbar and looks like a tilted rectangle) and a line appears in the center of your image.

**STEP 3**

The panel in the Learning Center tells you exactly what you need to do to straighten the image. Move the endpoints of the line until it lines up with a horizontal or vertical line in the image – in this case the horizon.

**STEP 4**

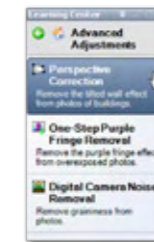
Then click the Apply button, or double-click the photo to apply the straightening.

Perspective correction**STEP 1**

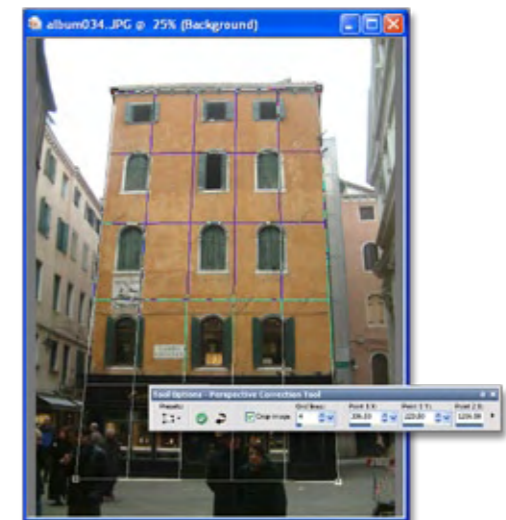
As well as straightforward editing tasks like opening and straightening images, the Learning Center can help you with more advanced techniques. The Perspective Correction tool can be used to straighten 'converging verticals' – the tendency for tall buildings to appear to be falling backwards when you tilt the camera upwards. Start by opening the problem photo and selecting the Adjust button on the Learning Center home page.

**STEP 2**

Click the Advanced Adjustments button at the bottom of the panel, followed by the Perspective Correction button. The Perspective Correction tool is automatically selected and a rectangular box appears in the center of the image window.

**STEP 3**

Follow the instructions in the Learning Center to align the box with the edges of the building. If the building shape is irregular and you find alignment difficult, enter a number of around four to eight in the Grid Lines box in the Tool Options palette. This applies a grid to the perspective rectangle, making it easier to align it with what should be vertical features on the building.



**STEP 4**

Click the Apply button to correct the perspective distortion. If you check the Crop Image box the edges of the photo will be cropped to remove the white space that appears as a result.

Cropping pictures

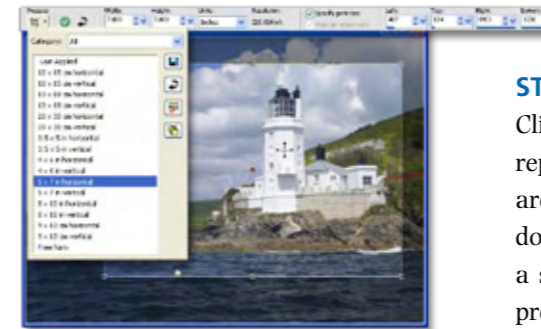
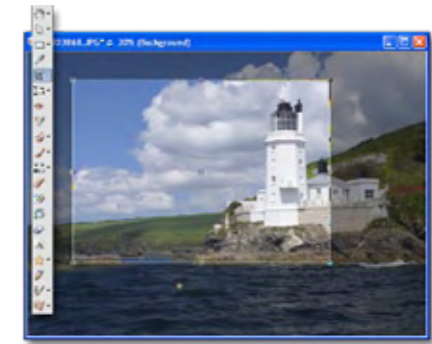
After a while you'll find you can do without the Learning Center for simple and even more advanced editing tasks. Most pictures need cropping for aesthetic reasons and there are very few pictures that can't be improved by removing some of the detail around the outside to focus attention on the central subject. You might also want to crop a picture to change its proportions for printing, for example so that it will fit a 4 × 6 inch or 5 × 7 inch frame, or a space on a web page.

Tip

Select the Crop tool, click the Presets button on the Options palette and select one of the preset crop sizes from the pull-down menu. You can save your own crop settings to this list, enabling you to quickly apply custom crop settings to any number of images.

STEP 1

Open a picture and choose the Crop tool from the Tools toolbar. The image area outside the crop rectangle is shaded. Adjust the crop area size or position.

**STEP 2**

Click inside the crop area and drag to reposition it. You can constrain the crop area to its existing proportions by holding down the Shift key. If you're cropping for a standard sized photo frame choose a preset from the Options palette.

STEP 3

When you're satisfied with the area you've chosen double-click in the crop area, or click the Apply button (the green check mark) on the Tool Options palette to crop the image. The inside section of the marquee remains while the image contents outside the crop area are discarded. Care must be taken so as not to crop off too much! If it is not right, choose 'Edit>Undo' or Ctrl+Z.



If you know the dimensions that the picture is to be cropped to, click the 'Specify Print Size' checkbox and enter the dimensions in the Width/Height and Units fields provided. The crop area automatically appears in the correct proportions for the desired crop. If you have many photos to be cropped for, say, a web gallery, this is a very productive

tool. Click-drag any of the corner 'handles' or edges to expand or contract the crop dimensions while maintaining proportions.

You can also snap the Crop tool to a previously made selection in the image, its layer opaqueness or a layer's merged opaqueness. Once the cropped image is saved, the discarded area cannot be recovered. As a general rule you should click File>Save As to save a copy and make sure you have the originals safely backed up on a CD!